



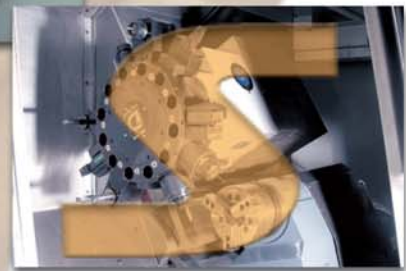
YMS series



Structure

Technology / Options

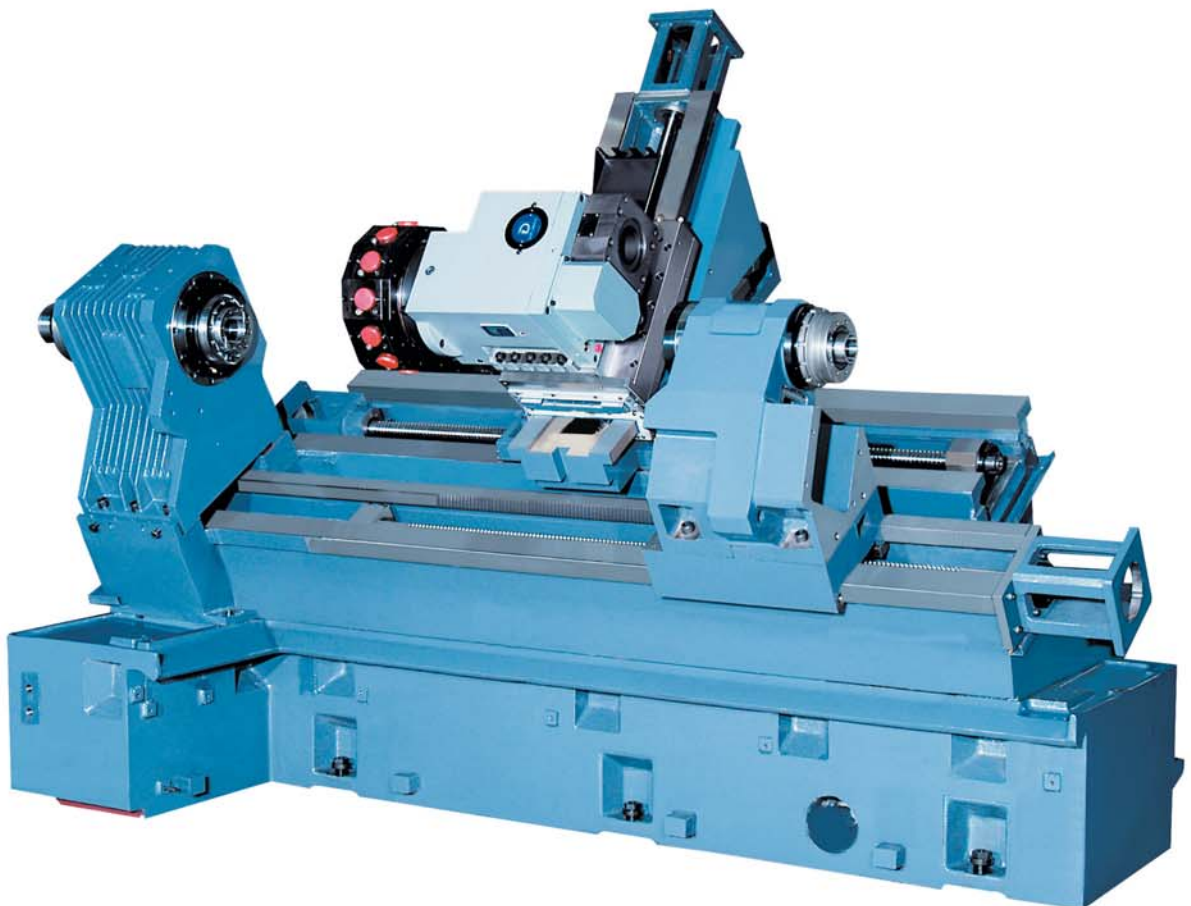
Turret



ALEX-TECH
MACHINERY INDUSTRIAL CO.,LTD.

SLANT-BED CONSTRUCTION

The machine features a super rigid pipe-structured 30 degree bed and a 30 degree compound Y slide on the X axis sliding seat. During heavy-duty cutting, turning or milling operation, it demonstrates excellent stability and versatility.

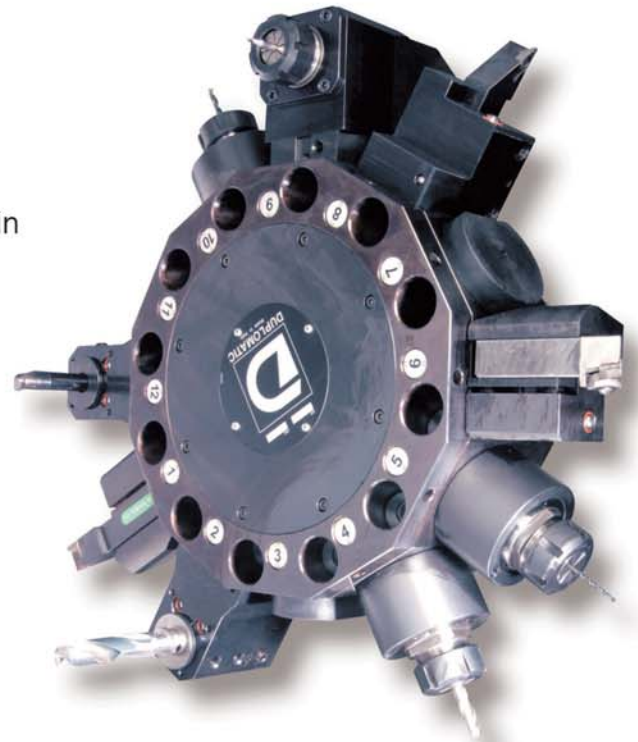




Spindle : The spindle is made of special alloy steel, and manufactured with complex machining procedures to obtain the optimum precision and durability.



Ballscrew : High precision bearings and coupling are used to support the super precision ballscrews to ensure reliability in positioning.



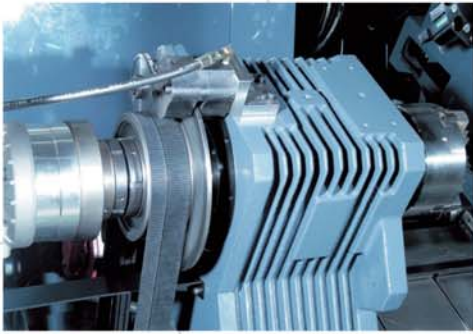
Turret : With Sauter model VDI turret the tip of O.D tool and the center of I.D tool are aligned on the same spindle center line. The tool set up procedure is thus simplified.



With the pulley headstock design, the external casting ribbing acts as a heat sink, dissipating any resulting heat effectively.

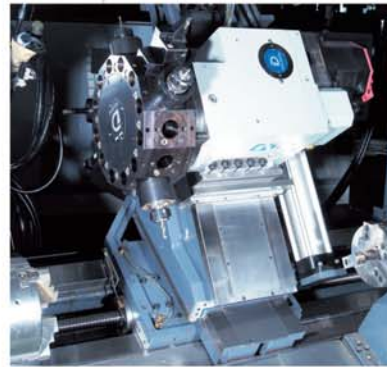


Sub-spindle : This machine may be equipped with servo driven sub-spindle or programmable tailstock. It provides flexibility to cope with a wider range of applications.



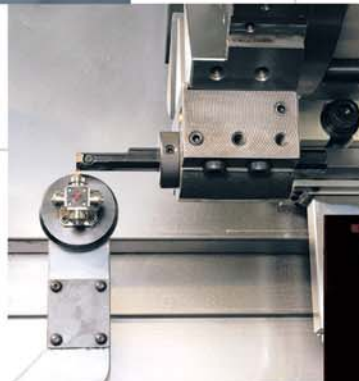
C-axis : There are 2 stages of pressure reduction in clamping the C axis to obtain high precision and stability in turning and milling operations.

- Part Catcher



A30 degree Y slide moves bi-directionally on the 30 degree X-sliding seat to provide a combination of single or two axis travel in X and Y. In particular, a balancing cylinder is added to ensure equal torques in “+” or “-” directional movement.

- Live Tooling



- Tool setter



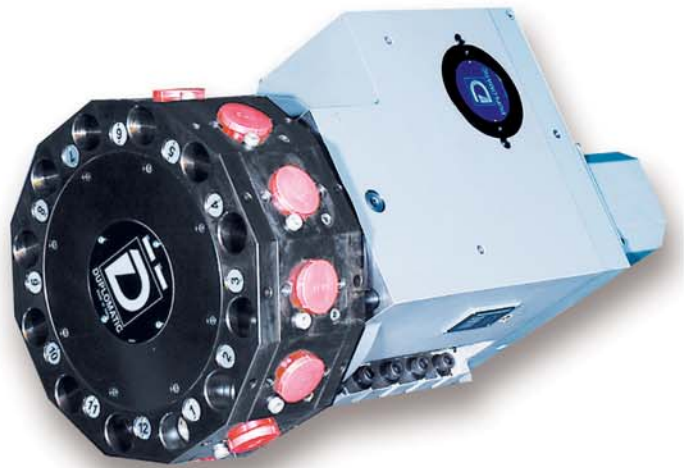
- Manual Guide i



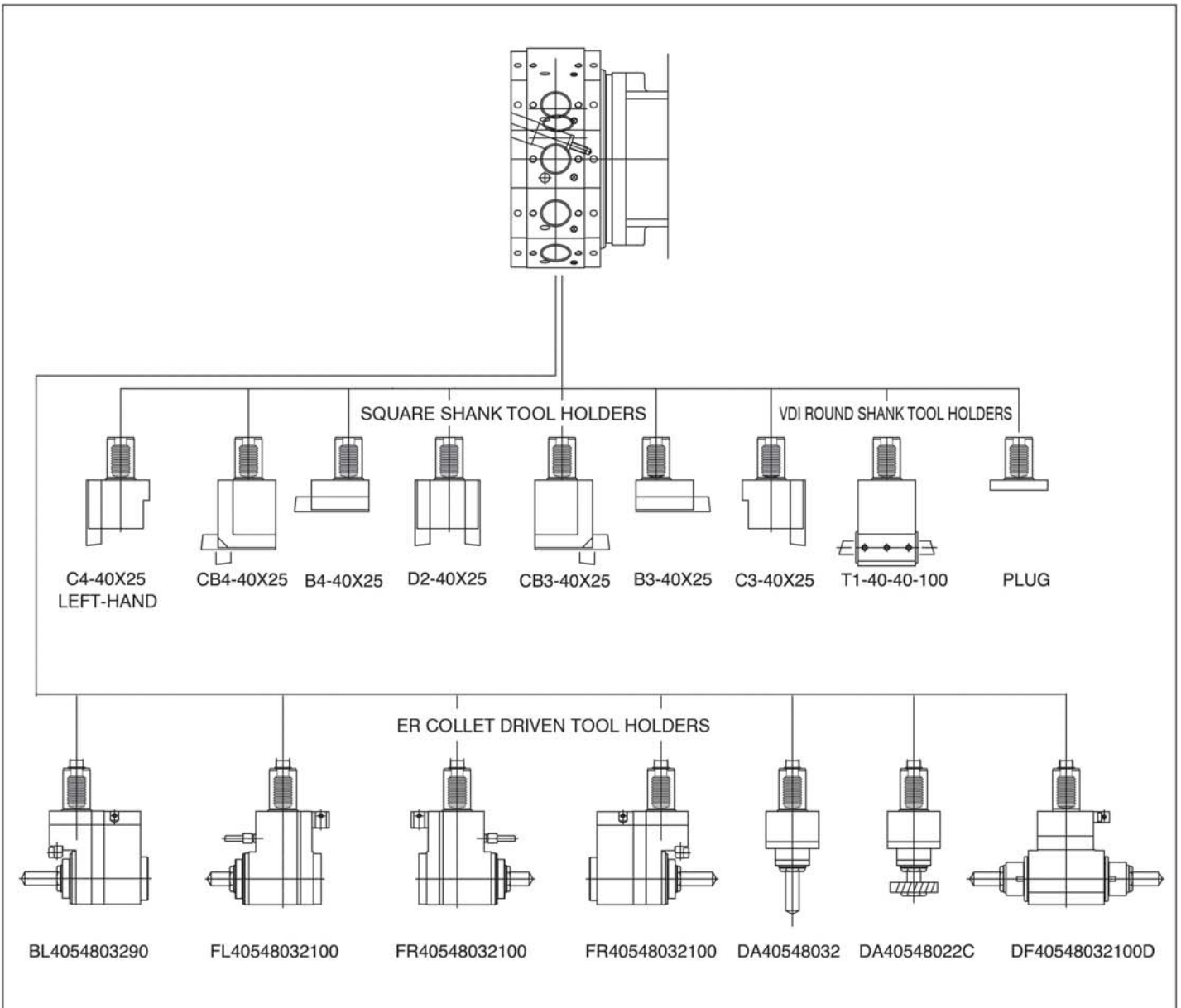
- Chip Conveyor



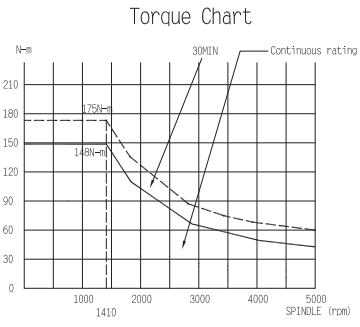
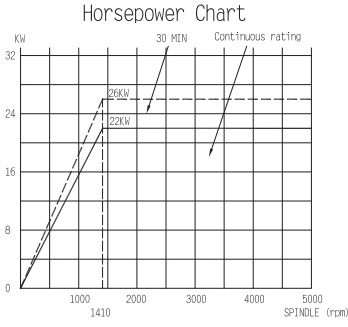
- Bar Feeder



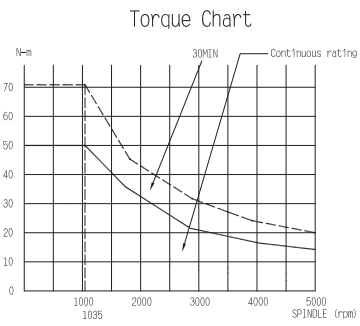
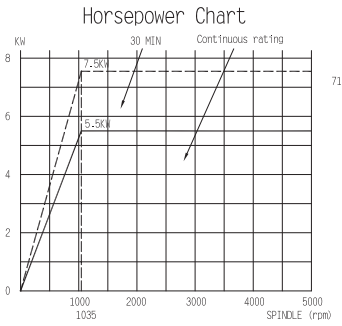
VDI 40
COUPLING 5480
RADIAL TURRET



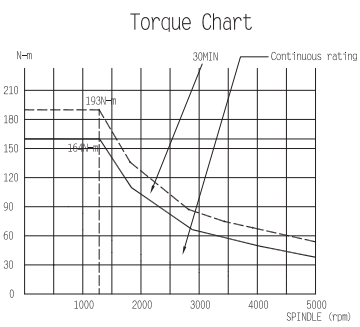
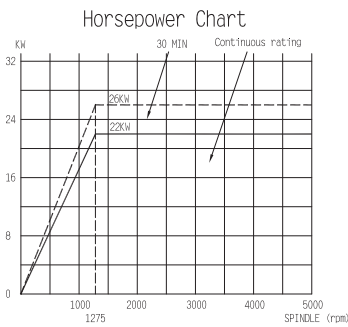
VT-2100YMS MAIN SPINDLE



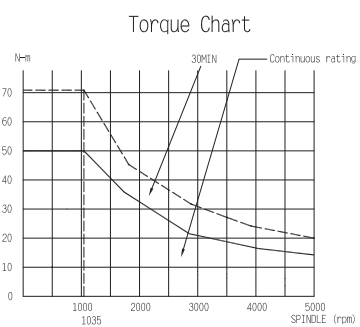
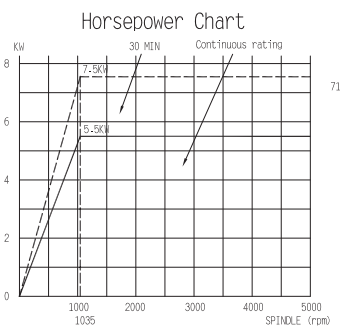
VT-2100YMS SUB SPINDLE



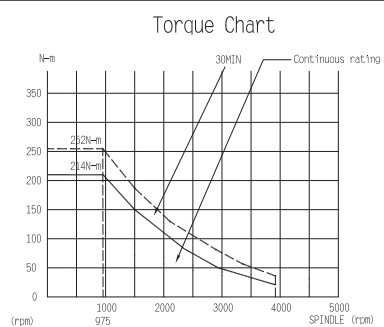
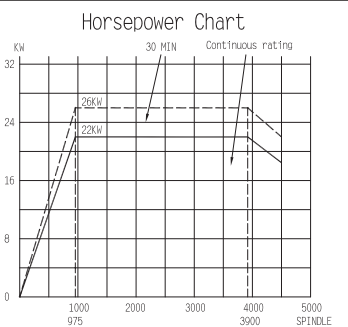
VT-2300YMS MAIN SPINDLE



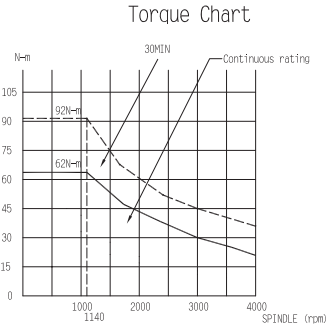
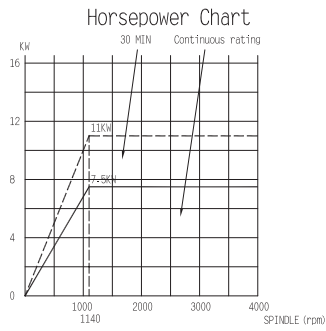
VT-2300YMS SUB SPINDLE



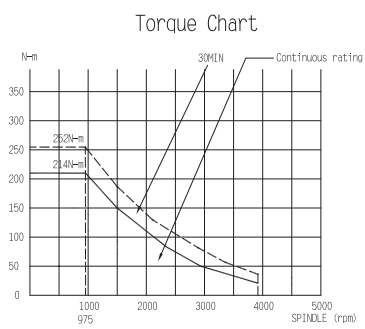
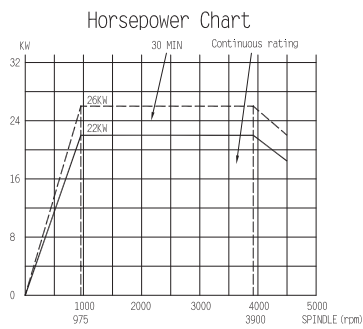
VT-2800YMS MAIN SPINDLE



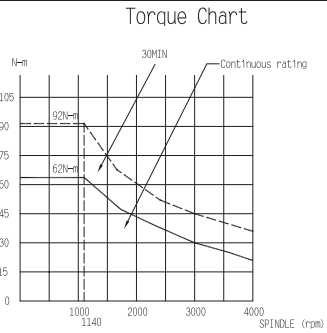
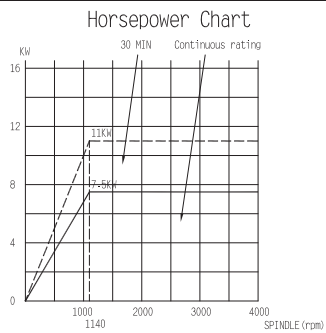
VT-2800YMS SUB SPINDLE



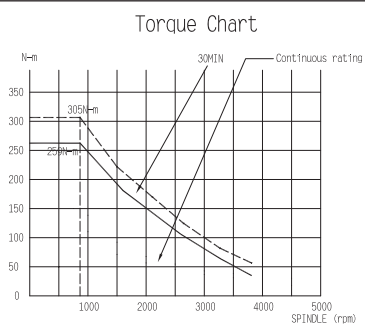
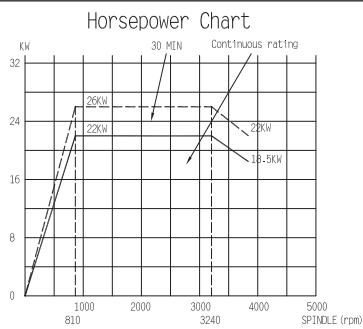
VT-3000YMS MAIN SPINDLE



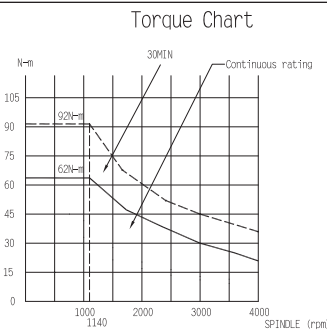
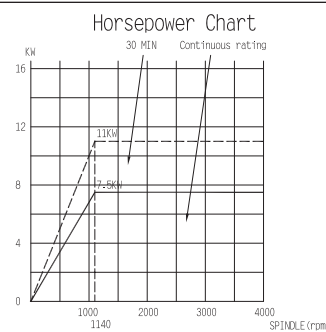
VT-3000YMS SUB SPINDLE



VT-3300YMS MAIN SPINDLE



VT-3300YMS SUB SPINDLE

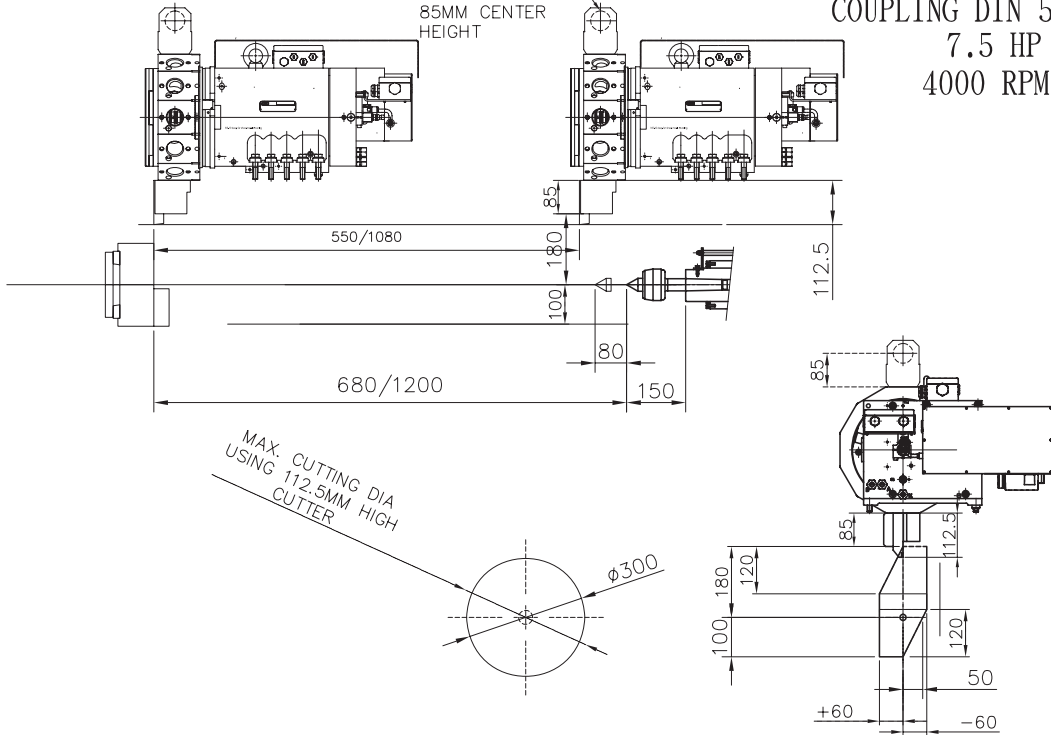


YMS series Tool Interference Diagram

VT-2100/2300YM VDI40 RADIAL

X AXIS TRAVEL
SET BY BORING
BAR HOLDER WITH
85MM CENTER
HEIGHT

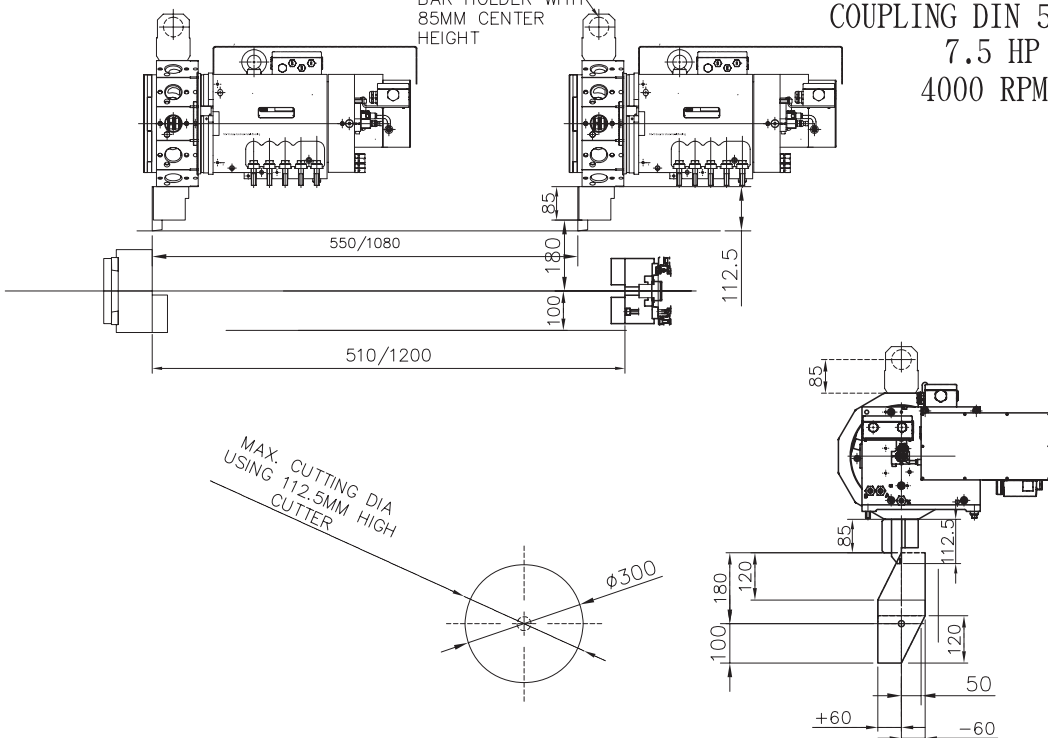
SAUTER VDI 40 RADIAL
0.5.450.420 SW:320
COUPLING DIN 5480
7.5 HP
4000 RPM



VT-2100/2300YMS VDI40 RADIAL

X AXIS TRAVEL
SET BY BORING
BAR HOLDER WITH
85MM CENTER
HEIGHT

SAUTER VDI 40 RADIAL
0.5.450.420 SW:320
COUPLING DIN 5480
7.5 HP
4000 RPM

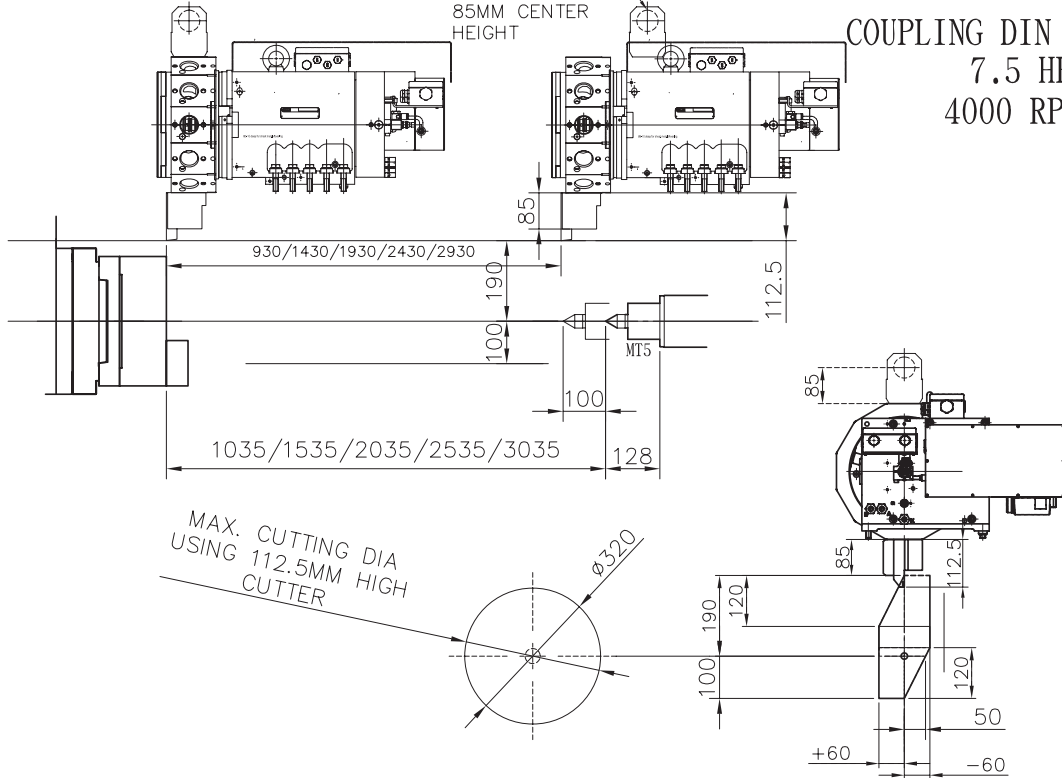


YMS series Tool Interference Diagram

VT-3000YM VDI40 RADIAL

X AXIS TRAVEL
SET BY BORING
BAR HOLDER WITH
85MM CENTER
HEIGHT

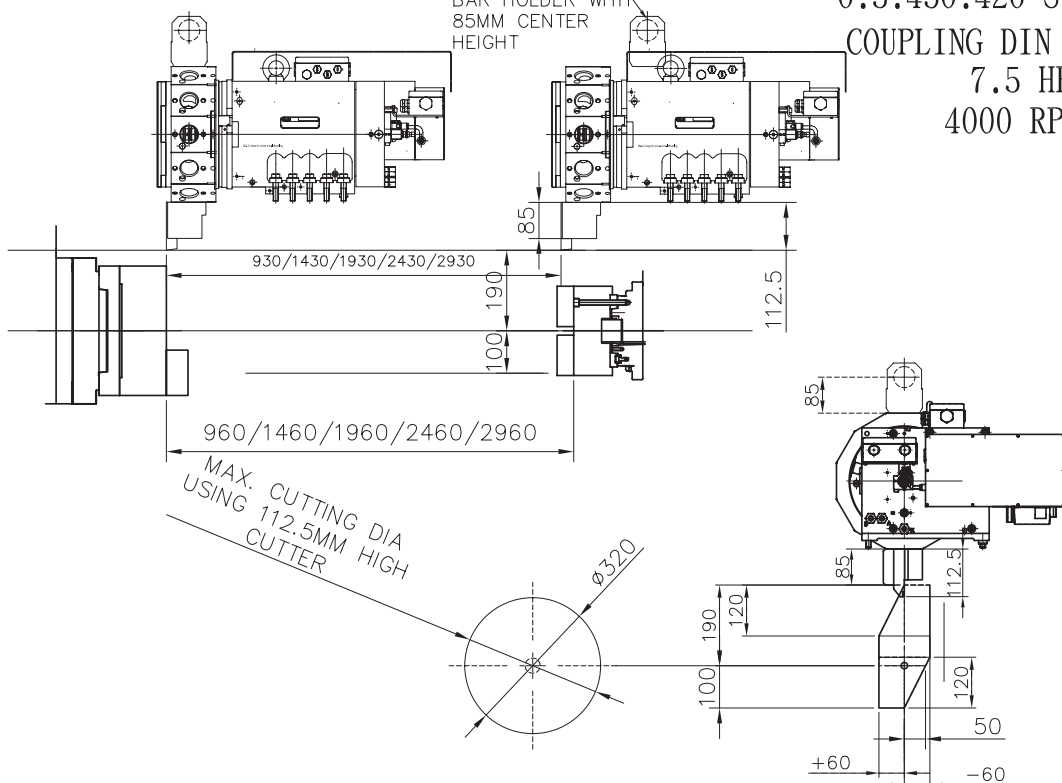
SAUTER VDI 40 RADIAL
0.5.450.420 SW:320
COUPLING DIN 5480
7.5 HP
4000 RPM



VT-3000YMS VDI40 RADIAL

X AXIS TRAVEL
SET BY BORING
BAR HOLDER WITH
85MM CENTER
HEIGHT

SAUTER VDI 40 RADIAL
0.5.450.420 SW:320
COUPLING DIN 5480
7.5 HP
4000 RPM

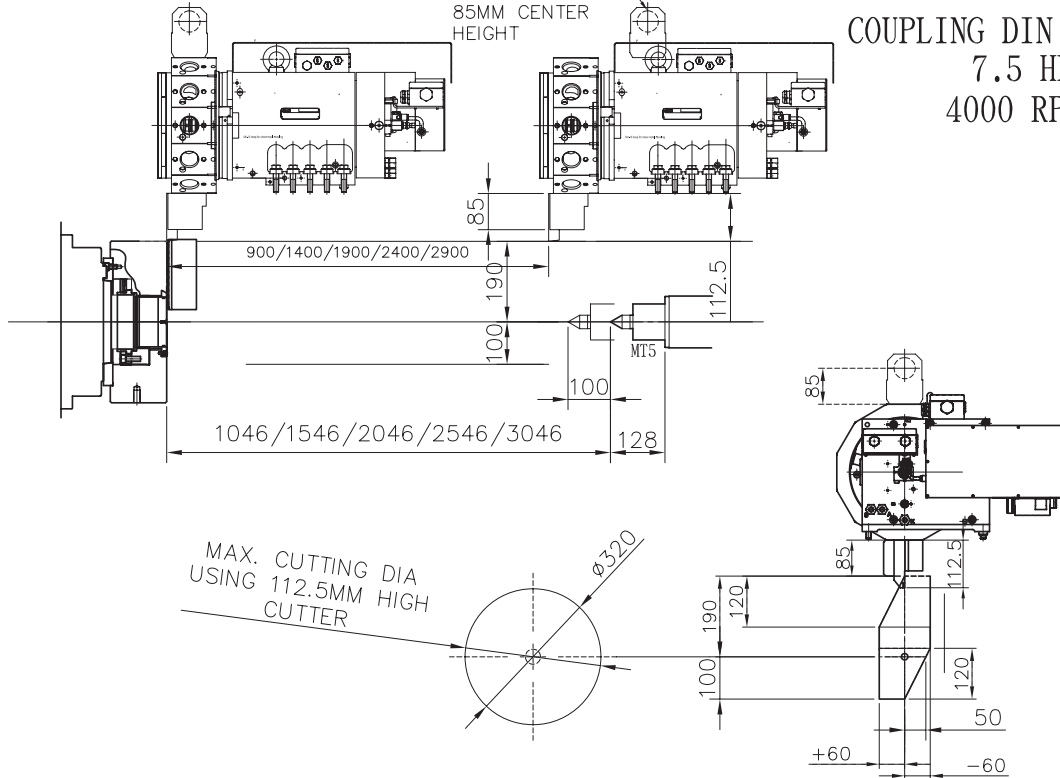


YMS series Tool Interference Diagram

VT-3300YM VDI40 RADIAL

X AXIS TRAVEL
SET BY BORING
BAR HOLDER WITH
85MM CENTER
HEIGHT

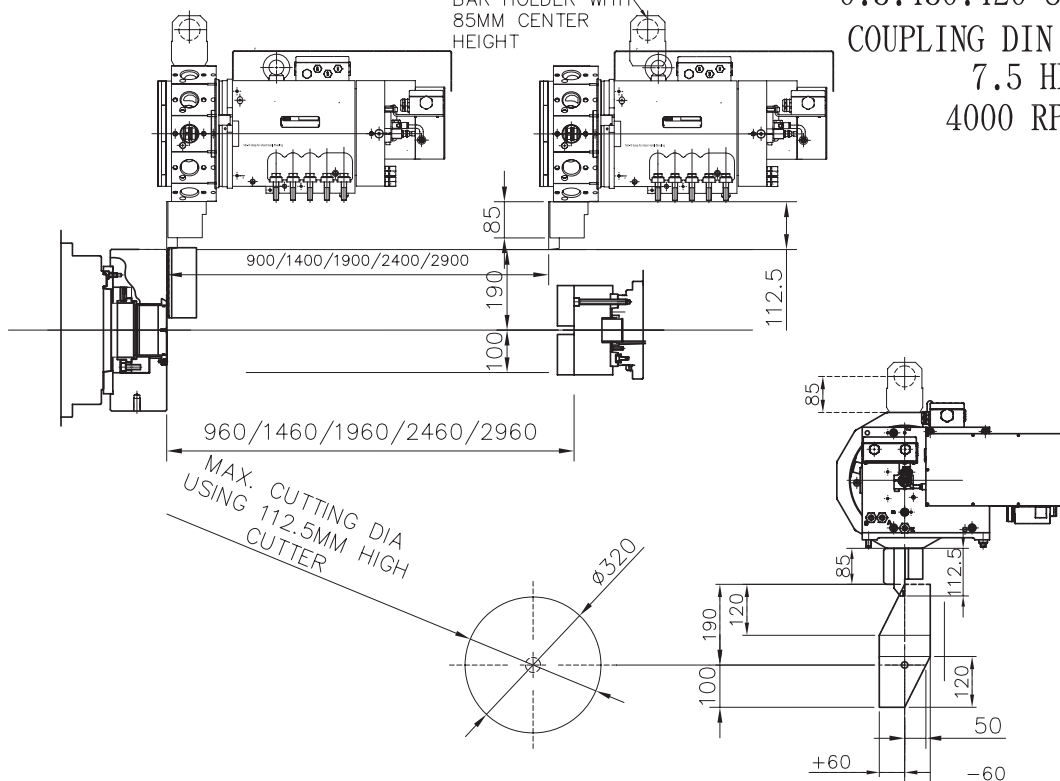
SAUTER VDI 40 RADIAL
0.5.450.420 SW:320
COUPLING DIN 5480
7.5 HP
4000 RPM



VT-3300YMS VDI40 RADIAL

X AXIS TRAVEL
SET BY BORING
BAR HOLDER WITH
85MM CENTER
HEIGHT

SAUTER VDI 40 RADIAL
0.5.450.420 SW:320
COUPLING DIN 5480
7.5 HP
4000 RPM



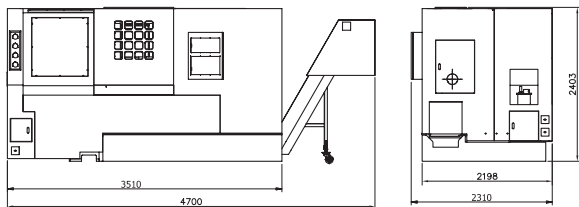
SPECIFICATIONS

SPECIFICATIONS	Unit	VT-2100YMS	VT-2100YM	VT-2300YMS	VT-2300YM	VT-2800YMS	VT-2800YM	VT-3000YMS	VT-3000YM	VT-3300YMS	VT-3300YM		
CAPACITY													
Swing over Z way cover	mm(inch)	600 (23.6")				600 (23.6")				600 (23.6")			
Max. turning diameter	mm(inch)	300(11.8")				320(12.6")				320(12.6")			
Swing over cross slide	mm(inch)	380 (14.96")				380 (14.96")				380 (14.96")			
Max. turning length	mm	505/1070	545/1070	505/1070	545/1070	960/1460/1960/2460/2960	1000/1500/2000/2500/3000	920/1420/1920/2420/2920	920/1420/1920/2420/2920	890/1390/1890/2390/2890	890/1390/1890/2390/2890		
Slide way slant angle	degree	30+30				30+30				30+30			
TRAVEL													
X-axis travel	mm(inch)	180+100(7.08"+3.9")				190+100(7.48"+3.9")				190+100(7.48"+3.9")			
Y-axis travel	mm(inch)	60/-60 (2.4"/-2.4")				60/-60 (2.4"/-2.4")				60/-60 (2.4"/-2.4")			
Z-axis travel	mm	550/1080	550/1080	550/1080	550/1080	1000/1500/2000/2500/3000	1000/1500/2000/2500/3000	930/1430/1930/2430/2930	930/1430/1930/2430/2930	900/1400/1900/2400/2900	900/1400/1900/2400/2900		
W-axis travel	mm	510/1200	-	510/1200	-	960/1460/1960/2460/2960	-	960/1460/1960/2460/2960	-	960/1460/1960/2460/2960	-		
SPINDLE													
Type of spindle nose	ISO	A2-6	A2-6	A2-8	A2-8	A2-8	A2-8	A2-11	A2-11	A2-11	A2-11		
Main spindle through capacity	mm(inch)	62(2.4")		75(2.9")		87(3.4")		105(4.1")		131(5.15")			
Main chuck type	mm(inch)	203(8")		254(10")		254(10")		305(12")		380(15")			
Main spindle through bar capacity	mm(inch)	52(2.1")		65(2.6")		77(3")		90(3.5")		115(4.52")			
Main spindle speed	rpm	4500		4000		3500		3000		2400			
Main spindle drive motor(30min)	KW (Hp)	15(20)		15(20)		26(35)		26(35)		26(35)			
Sub. chuck type	inch	6"	-	6"	-	8"	-	8"	-	8"	-		
Sub. spindle drive motor(30min)	HP	7.5	-	7.5	-	10	-	10	-	10	-		
Sub. spindle speed	rpm	5000	-	5000	-	4000	-	4000	-	4000	-		
Sub. spindle through bar capacity	mm	42(1.7")	-	42(1.7")	-	52(2.1")	-	52(2.1")	-	52(2.1")	-		
MOTOR													
X-axis servo motor		α 22 , 5.4HP											
Y-axis servo motor		α 22 , 5.4HP											
Z-axis servo motor		α 22 , 5.4HP											
TURRET													
Turret type		VDI40 (SW=320)				VDI40 (SW=320)				VDI40 (SW=320)			
Shank height of square tool	mm(inch)	25 (1")				25 (1")				25 (1")			
Shank diameter for boring bar	mm(inch)	40 (1.6")				40 (1.6")				40 (1.6")			
Torque	NM	22	36	22	36	22	36	22	36	22	36		
FEEDRATE													
Ballscrew diameter of X-axis	mm(inch)	φ 28XP6(φ 1.1"XP0.2)											
Ballscrew diameter of Z-axis	mm(inch)	φ 40XP10(φ 1.6"XP0.4)											
Ballscrew diameter of Y-axis	mm(inch)	φ 32XP8(φ 1.3"XP0.3)											
Ballscrew diameter of W-axis	mm	φ 40XP10	-	φ 40XP10	-	φ 40XP10	-	φ 40XP10	-	φ 40XP10	-		
TAILSTOCK													
Tailstock spindle diameter	mm(inch)	-	85(3.4")	-	85(3.4")	-	110(4.3")	-	110(4.3")	-	110(4.3")		
Tailstock spindle travel	mm(inch)	-	80(3.2")	-	80(3.2")	-	100(3.9")	-	100(3.9")	-	100(3.9")		
Taper hole of tailstock spindle		-	MT4	-	MT4	-	MT5	-	MT5	-	MT5		
REMARKS													
Floor space	mm	3510x2310x2403 / 4010x2310x2403				4062x2480x2403 / 4562x2480x2403 / 5062x2480x2403 / 5562x2480x2403 / 6062x2480x2403							
Machine weight	Kg	7000(0.5M)/7500(1M)		7000(0.5M)/7500(1M)		7700(1M)/8580(1.5M)/9300(2M)/10170(2.5M)/10880(3M)		7900(1M)/8780(1.5M)/9500(2M) /10370(2.5M)/11100(3M)		8400(1M)/9280(1.5M)/10000(2M) /10870(2.5M)/11580(3M)			

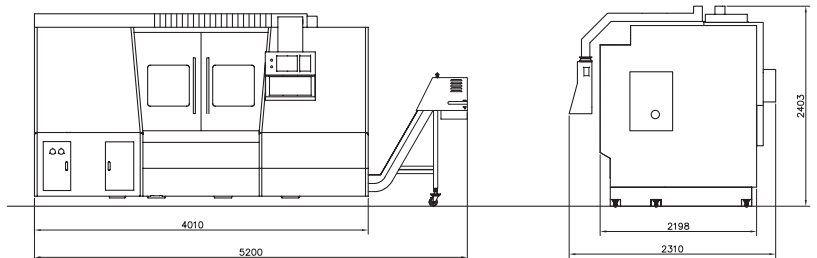
• Specifications are subject to change without prior notice.

MACHINE DIMENSIONS

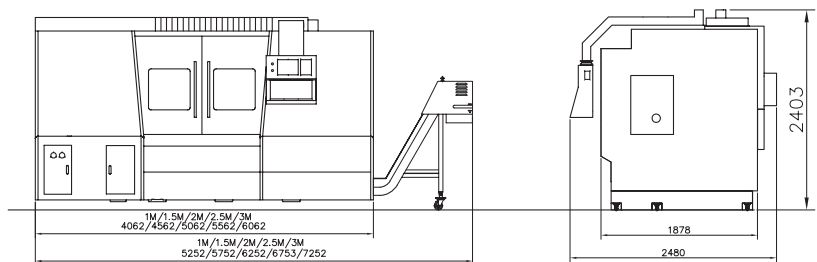
VT-2100/2300 (0.5M)



VT-2100/2300 (1M)



VT-2800/3000/3300 (1M / 1.5M / 2M / 2.5M / 3M)



ALEX-TECH
 MACHINERY INDUSTRIAL CO.,LTD.
 NO.5 Chun An Rd., Shengang District, Taichung City 429, Taiwan
 Tel : 886-4-25626039 Fax : 886-4-25626040
 Web : <http://www.alex-tech.com>
 E-mail : alextech@ms24.hinet.net



MIGHTY USA, INC.
 19706 South Normandie Avenue Torrance,
 CA 90502 U.S.A
 Tel : 310-516-7478 Fax : 310-516-0368
 Web : www.mightyusa.com
 E-mail : sales@mightyusa.com